

Our Cultural Heritage

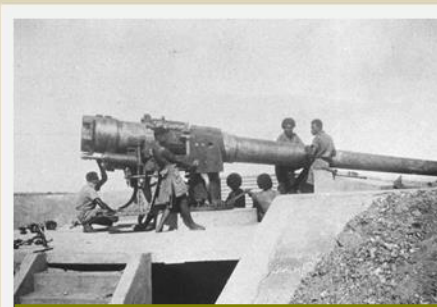
MOMI BATTERY HISTORICAL PARK



In early 1940s, Fiji waited for a war that never arrived. Gun batteries, airports, camps, and other infrastructure were constructed to secure Fiji from the invading Japanese forces during the 2nd World War. One of the remaining batteries from this conflict is in Momi which still holds two 6" Breech-Loading Naval Guns, one of which was used during the Boer War in South Africa (1899 - 1902) and the other from the 1st World War.

Other structures include a Command Post, Fire Control Rooms, Armories and foundation of the barracks and a hospital.

The site was selected to guard the Navula Passage, the main entry point to Nadi Harbour where the main Air Defense Force was based, which is now the Nadi International Airport.



FIJIAN ASSISTANCE

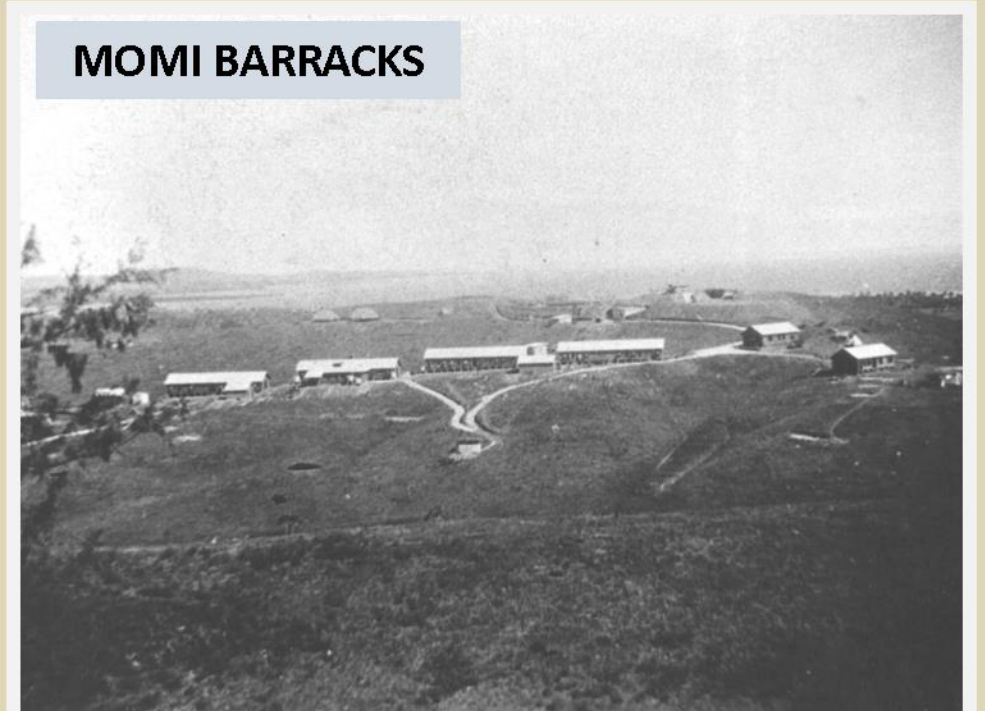


NEW ZEALAND ARMY



RESTORATION

MOMI BARRACKS



National Trust of Fiji Islands
3 Ma'afu Street, Suva
P.O. Box 2089, Government Buildings
Tel: (679) 3301807 Fax: (679) 3305092
Email: info@nationaltrust.org.fj